



Imprint On My Heart®

Kathryn Albers Designs



Keepsake Catalog

Fingerprint & Handwriting Jewelry



A



B



C



D



E



F



G



H



I



Imprint On My Heart®
Kathryn Albers Designs

Choosing Quality with Imprint On My Heart

Imprint On My Heart uses only the finest solid cast precious metals and natural gemstones. Our keepsakes are the top-of-the-line choice for fingerprint jewelry. Prints and handwriting are cast into the metal (not engraved) so they do not wear off. This attention to quality materials and craftsmanship ensures you will receive an heirloom quality keepsake that will last for generations.

Choosing your Keepsake

Print Type

Use any fingerprint, thumbprint, hand/footprint for your design. A hand/footprint will work best for infants. Imprint On My Heart can supply an ink fingerprint kit to take your own prints at home if you do not already have them.

Selecting Jewelry Design and Size

All our keepsakes are solid cast, sturdy and ideal for everyday wear. Please consider size when choosing the design that fits your needs. Engraving is always included.



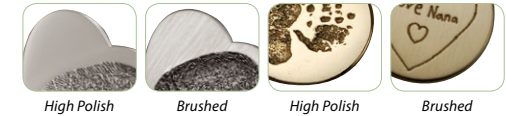
Petite
~1/2"

Medium
~3/4"

Large
~1"

Choosing a Metal and Finish

We offer Sterling Silver, 14k and 18k White, Yellow and Rose Gold. Some select pieces are also offered in Platinum. A high polish or brushed finish is available for any keepsake.



High Polish

Brushed

High Polish

Brushed

Additional Customization

You can add handwriting and/or gemstones to any piece.

Gemstone Pricing is as follows unless otherwise noted. 2mm | 3mm | 4mm

● Garnet (Jan) \$100 \$200 \$250	● Alexandrite (Jun) \$250 \$600 \$3000
● Amethyst (Feb) \$100 \$200 \$250	● Ruby (Jul) \$100 \$250 \$1000
● Aquamarine (Mar) \$100 \$200 \$300	● Peridot (Aug) \$100 \$200 \$250
● White Topaz (Apr) \$100 \$200 \$250	● Sapphire (Sept) \$100 \$275 \$800
● Diamond Melee \$200 \$400 \$750	● Pink Tourmaline (Oct) \$100 \$200 \$250
● Diamond Serialized 4mm \$2000	● Golden Topaz (Nov) \$100 \$200 \$250
● Emerald (May) \$200 \$400 \$800	● Blue Topaz (Dec) \$100 \$200 \$250

Throughout this catalog you will find examples of keepsakes others have created. These are presented to serve as a general guide for ordering—not as exact representations of what your piece will look like. Because each piece is custom made especially for you, and because each fingerprint is unique, please understand that variations will occur.

Would you like assistance with your order? Friendly, personal service is available by calling 888.515.8324. Order online anytime at www.ImprintOnMyHeart.com.

Imprint Collection



A



E



F



G



H

A. Heart Slider w/Gemstone Bezel*

(A77) SS \$750* | 14k \$2800* | 18k \$3600*

B. Heart w/Gemstone Bezel*

(A72) SS \$750* | 14k \$2800* | 18k \$3600*

C. Heart w/Baby Prints w/Gemstone Bezel*

Large (A74BA) SS \$750* | 14k \$2800* | 18k \$3600*

Medium (A51BA) SS \$650* | 14k \$2400* | 18k \$3200*

D. Heart w/Gemstone Bezel*

Large (A74) SS \$750* | 14k \$2800* | 18k \$3600*

Medium (A50) SS \$650* | 14k \$2400* | 18k \$3200*

E. Modern Square

(C30) SS \$675 | 14k \$2700 | 18k \$3800 | Platinum \$9500

F. Trevi Slider

(F1) 18k \$4200 | Platinum \$6500

G. Fiore Cocktail Ring

(B29) SS \$1800 | 14k \$6000 | 18k \$8000

H. Heart Slider

Large (A4) SS \$600 | 14k \$2500 | 18k \$3300

Medium (A3) SS \$525 | 14k \$1600 | 18k \$2100

I. Spring Flower (B37) SS \$650 | 14k \$2800 | 18k \$3800

J. Spring Flower Earrings

(B38) SS \$650 | 14k \$2800 | 18k \$3800

*Gemstones pictured are not included in pricing of any item.
For individual gemstone pricing, please see page 2.*

**For Gemstone Bezel pieces, gemstone addition pricing is listed below for Large | Medium keepsakes.*

Garnet (Jan) \$2000 | \$1200

Amethyst (Feb) \$2000 | \$1400

Aquamarine (Mar) \$2000 | \$1200

White Topaz (Apr) \$2000 | \$1200

Diamond Melee \$4200 | \$2800

Emerald (May) \$3800 | \$2000

Alexandrite (Jun) \$4000 | \$2800

Ruby (Jul) \$2800 | \$1400

Peridot (Aug) \$2000 | \$1200

Sapphire (Sept) \$2300 | \$1200

Pink Tourmaline (Oct) \$2300 | \$1200

Golden Topaz (Nov) \$2000 | \$1200

Blue Topaz (Dec) \$2300 | \$1200



B



C



D



I

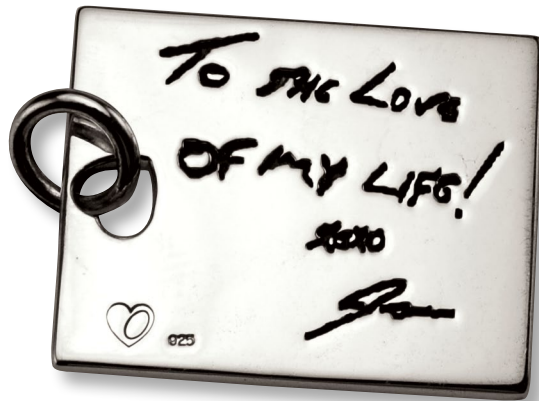


J

OUR MOST LUXURIOUS KEEPSAKE COLLECTION

The finest solid cast sterling, gold and platinum paired with the highest quality gemstones create a collection of stunning keepsakes that are sure to turn heads.

Handwriting



A



B



C



D



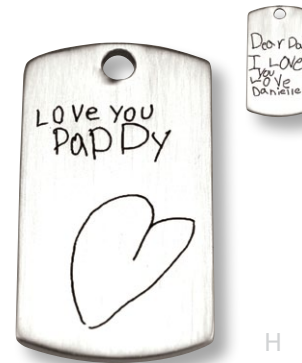
E



F



G



H



I

A. Long Rectangle Tag

(C13LN) SS \$575 | 14k \$2400 | 18k \$3200

B. Heart Pendant

Large (A2LN) SS \$575 | 14k \$2400 | 18k \$3200
Medium (A1LN) SS \$500 | 14k \$1500 | 18k \$2000

C. Circle Pendant

Large (B2LN) SS \$575 | 14k \$2400 | 18k \$3200
Medium (B1LN) SS \$500 | 14k \$1500 | 18k \$2000

D. Heart Pendant

Large (A2LN) SS \$575 | 14k \$2400 | 18k \$3200
Medium (A1LN) SS \$500 | 14k \$1500 | 18k \$2000

E. Heart Pendant

Large (A2LN) SS \$575 | 14k \$2400 | 18k \$3200
Medium (A1LN) SS \$500 | 14k \$1500 | 18k \$2000

F. Oval Pendant

Large (B6LN) SS \$575 | 14k \$2400 | 18k \$3200
Medium (B5LN) SS \$500 | 14k \$1500 | 18k \$2000

G/H. Dog Tag

Large (C2LN) SS \$650 | 14k \$4500 | 18k \$6000
Small (C1LN) SS \$575 | 14k \$2800 | 18k \$3400

I. Circle Pendant

Large (B2LN) SS \$575 | 14k \$2400 | 18k \$3200
Medium (B1LN) SS \$500 | 14k \$1500 | 18k \$2000

PRESERVE A LOVE NOTE FOR GENERATIONS

Handwriting keepsakes are created using actual handwriting samples and/or artwork. They can be a stand alone piece or added to any fingerprint jewelry design.

Pendants & Charms



A



B



C



D



E



F



G



H



I

A. Fiore Slider

Large (B28) SS \$650 | 14k \$3500 | 18k \$4800

Small (B27) SS \$550 | 14k \$2600 | 18k \$3500

B. Rope Loop Heart

Large (A6) SS \$600 | 14k \$2600 | 18k \$3400

Medium (A5) SS \$525 | 14k \$2400 | 18k \$3200

C. Heart Pendant

Large (A2) SS \$575 | 14k \$2400 | 18k \$3200

Medium (A1) SS \$500 | 14k \$1500 | 18k \$2000

D. Petite Fancy Heart

(J14) SS \$450 | 14k \$1300 | 18k \$1600

E. Four Leaf Clover

(D8) SS \$575 | 14k \$2400 | 18k \$3200

F. Oval Pendant

Large (B6) SS \$575 | 14k \$2400 | 18k \$3200

Medium (B5) SS \$500 | 14k \$1500 | 18k \$2000

G. Sunflower

(J26) SS \$600 | 14k \$2500 | 18k \$3300

E. Heart Key

(D21) SS \$575 | 14k \$2400 | 18k \$3200

F. Circle Key

(D20) SS \$575 | 14k \$2400 | 18k \$3200

SOMETHING FOR EVERYONE

Custom designed from hearts to clovers to keys.

*Gemstones pictured are not included in pricing of any item.
For individual gemstone pricing, please see page 2.*

Men's



A



B



C



D



E



F



G



H



I



J



K

A-D. Dog Tag

Large (C2) SS \$650 | 14k \$4500 | 18k \$6000

Small (C1) SS \$575 | 14k \$2800 | 18k \$3400

E. Maltese Cross (C8) SS \$550 | 14k \$2400 | 18k \$3200

F. Baseball (B12) SS \$600 | 14k \$3000 | 18k \$3800

G. Circle Pendant

Large (B2) SS \$575 | 14k \$2400 | 18k \$3200

Medium (B1) SS \$500 | 14k \$1500 | 18k \$2000

H. Partial Fingerprint Band (C20) SS \$650 | 14k \$2100 | 18k \$2800

I. Band w/Baguettes* (C33) SS \$675* | 14k \$2600* | 18k \$3200*

J. Oval Cuff Links (M1) SS \$750 | 14k \$3000 | 18k \$4000

K. Rectangle Cuff Links (M6) SS \$750 | 14k \$3000 | 18k \$4000

*For Baguette pieces, price listed is the base price without gemstones.

Baguettes cut gemstone pricing as follows:

Garnet (Jan) \$200
Amethyst (Feb) \$200
Aquamarine (Mar) \$200
White Topaz (Apr) \$200
Diamond Melee \$2800
Emerald (May) \$2000
Alexandrite (Jun) \$5200

Ruby (Jul) \$1800
Peridot (Aug) \$220
Sapphire (Sept) \$800
Pink Tourmaline (Oct) \$200
Golden Topaz (Nov) \$200
Blue Topaz (Dec) \$200

KEEPSAKES FOR MEN

The perfect, personalized keepsake for him to wear everyday or with his best suit.

Family



A



E



F



G



H



B



C



D



I

FOR THE WHOLE FAMILY

Create a keepsake with all the children and grandchildren's prints.
Custom designed with your entire family in mind.

- A. Dog Tag w/Multiple Prints**
(C2) SS \$650 | 14k \$4500 | 18k \$6000
- B. Heart w/Two Fingerprints**
(A12) SS \$500 | 14k \$1500 | 18k \$2000
- C. Cascading Hearts**
Large (A8) SS \$1100 | 14k \$4700 | 18k \$6400
Medium (A7) SS \$900 | 14k \$2800 | 18k \$4000
- D. Double Rope Loop Heart**
(A14) SS \$650 | 14k \$2500 | 18k \$3400
- E. Family Fingerprints Pendant w/Four Prints**
(B22) SS \$1800 | 14k \$5500 | 18k \$6800
- F. Petite Circle Teardrop Pendant**
(B26) SS \$600 | 14k \$3000 | 18k \$3800
- G. Circle Family Fingerprints Ring**
(C34) SS \$750 | 14k \$3200 | 18k \$4000
- H. Extra Large Circle w/Multiple Fingerprints**
(B17) SS \$625 | 14k \$2800 | 18k \$3600
- I. Yin Yang (B25) SS \$600 | 14k \$2400 | 18k \$3200**

Baby



A



B



C



D



E



F



G



H



I



A/B. Heart Slider

Large (A4BA) SS \$600 | 14k \$2500 | 18k \$3300
Medium (A3BA) SS \$525 | 14k \$1600 | 18k \$2100

C. Heart Pendant w/ Baby Print

Large (A2BA) SS \$575 | 14k \$2400 | 18k \$3200
Medium (A1BA) SS \$500 | 14k \$1500 | 18k \$2000

D. Heart Locket w/Baby Prints

(D1BA) SS \$950 | 14k \$3000 | 18k \$4000

E. Heart w/Baby Prints w/Gemstone Bezel*

Large (A74BA) SS \$750* | 14k \$2800* | 18k \$3600*
Medium (A50BA) SS \$650* | 14k \$2400* | 18k \$3200*

F. Teardrop Charm w/ Baby Print

Large (B8BA) SS \$575 | 14k \$2400 | 18k \$3200
Medium (B7BA) SS \$500 | 14k \$1500 | 18k \$2000

G. Heart Pendant w/ Baby Print

Large (A2BA) SS \$575 | 14k \$2400 | 18k \$3200
Medium (A1BA) SS \$500 | 14k \$1500 | 18k \$2000

H. Cuff Links w/ Baby Prints

(M9BA) SS \$750 | 14k \$3000 | 18k \$4000

I. Dog Tag w/Baby Prints

Large (C2BA) SS \$650 | 14k \$4500 | 18k \$6000
Small (C1BA) SS \$575 | 14k \$2800 | 18k \$3400

Gemstones pictured are not included in pricing of any item.
For individual gemstone pricing, please see page 2.

*For Gemstone Bezel pieces, price listed is the base price without gemstones. Gemstone pricing as follows for Large | Medium.

Garnet (Jan) \$2000 | \$1200
Amethyst (Feb) \$2000 | \$1400
Aquamarine (Mar) \$2000 | \$1200
White Topaz (Apr) \$2000 | \$1200
Diamond Melee \$4200 | \$2800
Emerald (May) \$3800 | \$2000
Alexandrite (Jun) \$4000 | \$2800

Ruby (Jul) \$2800 | \$1400
Peridot (Aug) \$2000 | \$1200
Sapphire (Sept) \$2300 | \$1200
Pink Tourmaline (Oct) \$2300 | \$1200
Golden Topaz (Nov) \$2000 | \$1200
Blue Topaz (Dec) \$2300 | \$1200

LITTLE FINGERS AND LITTLE TOES

Capturing memories of those special days with the hand or footprints of your baby.

Locket



A



E

F



G



B



C



D



H



I

A. Circle Locket

Large (D5) SS \$950 | 14k \$3000 | 18k \$4000

Medium (D4) SS \$800 | 14k \$2600 | 18k \$3500

B. Heart Locket w/Baby Prints

(D1BA) SS \$950 | 14k \$3000 | 18k \$4000

C. Circle Locket

Large (D5) SS \$950 | 14k \$3000 | 18k \$4000

Medium (D4) SS \$800 | 14k \$2600 | 18k \$3500

D. Heart Locket

(D1) SS \$950 | 14k \$3000 | 18k \$4000

E/F. Oval Locket

Large (D3) SS \$950 | 14k \$3000 | 18k \$4000

Medium (D2) SS \$800 | 14k \$2600 | 18k \$3500

G. Heart Locket w/Gemstone Bezel*

(A76) SS \$1050* | 14k \$3200* | 18k \$4200*

H. Teardrop Locket (D10)

SS \$950 | 14k \$3000 | 18k \$4000

I. Rectangle Locket (D19)

SS \$950 | 14k \$3000 | 18k \$4000

*For Gemstone Bezel pieces, price listed is the base price without gemstones. Gemstone pricing as follows for Large | Medium.

Garnet (Jan) \$2000 | \$1200

Amethyst (Feb) \$2000 | \$1400

Aquamarine (Mar) \$2000 | \$1200

White Topaz (Apr) \$2000 | \$1200

Diamond Melee \$4200 | \$2800

Emerald (May) \$3800 | \$2000

Alexandrite (Jun) \$4000 | \$2800

Ruby (Jul) \$2800 | \$1400

Peridot (Aug) \$2000 | \$1200

Sapphire (Sept) \$2300 | \$1200

Pink Tourmaline (Oct) \$2300 | \$1200

Golden Topaz (Nov) \$2000 | \$1200

Blue Topaz (Dec) \$2300 | \$1200

PRICELESS TREASURES HELD BY YOUR HEART

These fine jewelry lockets have the option to place a photo and/or hair securely encased in resin inside.

Weddings



A



E



F



G



B



C



D



H



I

A. Overlapping Wedding Bands

(C31) SS \$1350 | 14k \$5400 | 18k \$6400

B/C/D. Wedding Band w/Baguettes*

(C33) SS \$675* | 14k \$2600* | 18k \$3200*

E. Full Fingerprint Band

(C40) SS \$650 | 14k \$2400 | 18k \$3000

F. Partial Fingerprint Band

(C20) SS \$650 | 14k \$2100 | 18k \$2800

G. Heart Diamond Fingerprint Band

(A64) SS \$750 | 14k \$3200 | 18k \$4000
add 3ct AGS Diamond \$72,000

H/I. Two Fingerprints w/Handwriting Band w/Princess Cut Stones**

(C32) SS \$675** | 14k \$2600** | 18k \$3200**

*Gemstones pictured are not included in pricing of any item.
For individual gemstone pricing, please see page 2.*

**For Baguette pieces, price listed is the base price without gemstones. Baguettes cut gemstone pricing as follows:*

Garnet (Jan) \$200	Ruby (Jul) \$1800
Amethyst (Feb) \$200	Peridot (Aug) \$220
Aquamarine (Mar) \$200	Sapphire (Sept) \$800
White Topaz (Apr) \$200	Pink Tourmaline (Oct) \$200
Diamond Melee \$2800	Golden Topaz (Nov) \$200
Emerald (May) \$2000	Blue Topaz (Dec) \$200
Alexandrite (Jun) \$5200	

***For Princess pieces, price listed is the base price without gemstones. Princess cut gemstone pricing as follows:*

Garnet (Jan) \$350	Alexandrite (Jun) \$7800
Amethyst (Feb) \$350	Ruby (Jul) \$6800
Aquamarine (Mar) \$650	Peridot (Aug) \$350
White Topaz (Apr) \$350	Sapphire (Sept) \$6000
Diamond Melee \$6300	Pink Tourmaline (Oct) \$500
Diamond Serialized \$9000	Golden Topaz (Nov) \$850
Emerald (May) \$5000	Blue Topaz (Dec) \$350

TRULY PERSONAL WEDDING BANDS

Create your wedding rings with your fingerprint and handwriting.

Rings



A



B



C



D



E



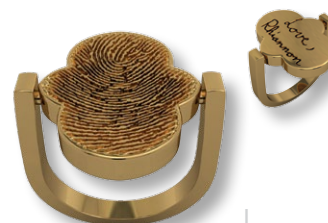
F



G



H



I

- A. Oval Family Fingerprints Ring**
(C35) SS \$750 | 14k \$3200 | 18k \$4000
- B. Stacked Hearts Ring**
(A56) SS \$750 | 14k \$3200 | 18k \$4000
- C/D. Multiple Hearts Fingerprint Ring**
(A54) SS \$750 | 14k \$3200 | 18k \$4000
- E. Heart Signet Ring**
(A10) SS \$650 | 14k \$2100 | 18k \$2800
- F. Open Two Circles Ring**
(B78) SS \$1000 | 14k \$3400 | 18k \$3800
- G. Circle Ring**
(B20) SS \$650 | 14k \$2400 | 18k \$3000
- H. Oval Flip Ring**
(B92) SS \$750 | 14k \$3200 | 18k \$4000
- I. Clover Flip Ring**
(B91) SS \$750 | 14k \$3200 | 18k \$4000

*Gemstones pictured are not included in pricing of any item.
For individual gemstone pricing, please see page 2.*

BEAUTY AND EXPRESSION

For the love of family, relationships and loved ones. Our rings can be made with one print or the entire family.

Sea Creatures



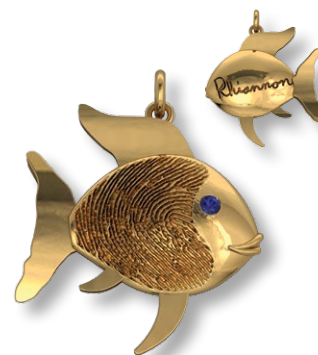
A



B



C



D



E



F



G



H

A/B/C. Starfish w/Gemstone Bezel*

(F1) SS \$625* | 14k \$2800* | 18k \$3400*

D. Tropical Fish

(F2) SS \$625 | 14k \$2800 | 18k \$3400

E. Sea Horse

(F3) SS \$625 | 14k \$2800 | 18k \$3400

F. Sea Turtle

(F4) SS \$625 | 14k \$2800 | 18k \$3400

G. Octopus

(F5) SS \$625 | 14k \$2800 | 18k \$3400

H. Dolphin

(F6) SS \$600 | 14k \$2600 | 18k \$3200

*Gemstones pictured are not included in pricing of any item.
For individual gemstone pricing, please see page 2.*

**For Gemstone Bezel pieces, price listed is the base price without gemstones. Gemstone pricing as follows for Large | Medium.*

Garnet (Jan) \$2000 | \$1200
Amethyst (Feb) \$2000 | \$1400
Aquamarine (Mar) \$2000 | \$1200
White Topaz (Apr) \$2000 | \$1200
Diamond Melee \$4200 | \$2800
Emerald (May) \$3800 | \$2000
Alexandrite (Jun) \$4000 | \$2800

Ruby (Jul) \$2800 | \$1400
Peridot (Aug) \$2000 | \$1200
Sapphire (Sept) \$2300 | \$1200
Pink Tourmaline (Oct) \$2300 | \$1200
Golden Topaz (Nov) \$2000 | \$1200
Blue Topaz (Dec) \$2300 | \$1200

UNDER THE SEA TREASURES

Beautiful and graceful, delicate and curious - crafted with a fingerprint for that special memory.

Symbolic



A



E



F



G



H



B



C



D



I

TIMELESS SYMBOLS OF FAITH AND COUNTRY

Honor, heart and soul - pieces that have a special sacred meaning.

- A. Tube Cross (C17) SS \$650 | 14k \$2600 | 18k \$3500
- B. Flared Cross* (C16) SS \$650 | 14k \$2600 | 18k \$3500
*shown w/two prints
- C. Framed Cross (C14) SS \$650 | 14k \$2600 | 18k \$3500
- D. Cross (C9) SS \$575 | 14k \$2400 | 18k \$3200
- E. Flag (A32) SS \$650 | 14k \$4500 | 18k \$6000
- F. Dog Tag (Horizontal or Vertical)
Large (C2) SS \$650 | 14k \$4500 | 18k \$6000
Small (C1) SS \$575 | 14k \$2800 | 18k \$3400
- G. Ichthys Fish (B18) SS \$575 | 14k \$2400 | 18k \$3200
- H. Maltese Cross (C8) SS \$550 | 14k \$2400 | 18k \$3200
- G. Angel Wing (B33) SS \$575 | 14k \$2400 | 18k \$3200

Special Interests



A



B



C



D



E



F



G



H



I

- A. Puzzle Piece**
(B19) SS \$500 | 14k \$1500 | 18k \$2000
- B. Dressage Stirrup**
(C63) SS \$575 | 14k \$2400 | 18k \$3200
- C. Nautical Porthole**
(B34) SS \$575 | 14k \$2400 | 18k \$3200
- D. Boxing Glove**
(D14) SS \$575 | 14k \$2400 | 18k \$3200
- E. Tennis Racquet**
(B14) SS \$575 | 14k \$2500 | 18k \$3200
- F. Golf Divot Tool**
(B21) SS \$650 | 14k \$3200 | 18k \$4800
- G. Convex Baseball**
(B79) SS \$575 | 14k \$2400 | 18k \$3200
- H. Football**
(B13) SS \$575 | 14k \$2400 | 18k \$3200
- I. Bicycle Slider**
(A18) SS \$575 | 14k \$2400 | 18k \$3200

SOMETHING FOR EVERYONE

Representing your favorite cause, sport or activity, we have custom designs to help you capture those cherished memories.

This & That



A



B



C



D



G



E



F



H



I

- A. Owl**
(D9) SS \$575 | 14k \$2400 | 18k \$3200
- B. Two Print Butterfly**
(J2) SS \$625 | 14k \$2600 | 18k \$3400
- C. Tulips**
(D23) SS \$750 | 14k \$2800 | 18k \$3200
- D. Petite Drop Earrings**
(J18) SS \$625 | 14k \$2000 | 18k \$2800
- E. Medium Drop Earrings - Teardrop**
(J19) SS \$675 | 14k \$2200 | 18k \$3000
- F. Medium Drop Earrings - Oval**
(J19) SS \$675 | 14k \$2200 | 18k \$3000
- G/H. Circle w/Initial Overlay**
Large (B11) SS \$600 | 14k \$3000 | 18k \$3800
Medium (B10) SS \$550 | 14k \$2000 | 18k \$2800
- I. Bead**
(B15) SS \$500 | 14k \$1800 | 18k \$2500

*Gemstones pictured are not included in pricing of any item.
For individual gemstone pricing, please see page 2.*

A KEEPSAKE LIKE NO OTHER

No matter what your interest or taste, we have a custom keepsake that is just right for you.

Pets



A. Heart w/Gemstone Bezel*
Large (A73P) SS \$750* | 14k \$2800* | 18k \$3600*

B/C. Heart Pendant
Large (A2P) SS \$575 | 14k \$2400 | 18k \$3200
Medium (A1P) SS \$500 | 14k \$1500 | 18k \$2000

D. Dog Tag
Large (C2P) SS \$650 | 14k \$4500 | 18k \$6000
Small (C1P) SS \$575 | 14k \$2800 | 18k \$3400

E. Circle Pendant
Large (B2P) SS \$575 | 14k \$2400 | 18k \$3200
Medium (B1P) SS \$500 | 14k \$1500 | 18k \$2000

F. Square Pendant
Large (C6P) SS \$575 | 14k \$2400 | 18k \$3200
Medium (C5P) SS \$500 | 14k \$1500 | 18k \$2000

G. Circle Cremation Ash Pendant**
Large (E17P) SS \$950 | 14k \$3000 | 18k \$4000
Medium (E16P) SS \$850 | 14k \$2800 | 18k \$3500

***For Gemstone Bezel pieces, price listed is the base price without gemstones. Gemstone pricing as follows for Large | Medium.**

Garnet (Jan) \$2000 \$1200	Ruby (Jul) \$2800 \$1400
Amethyst (Feb) \$2000 \$1400	Peridot (Aug) \$2000 \$1200
Aquamarine (Mar) \$2000 \$1200	Sapphire (Sept) \$2300 \$1200
White Topaz (Apr) \$2000 \$1200	Pink Tourmaline (Oct) \$2300 \$1200
Diamond Melee \$4200 \$2800	Golden Topaz (Nov) \$2000 \$1200
Emerald (May) \$3800 \$2000	Blue Topaz (Dec) \$2300 \$1200
Alexandrite (Jun) \$4000 \$2800	

THE FRIEND WHO IS ALWAYS AT YOUR SIDE

They are our children, our companion, our comfort. Any keepsake can be created with your pet's paw or nose print.



Imprint On My Heart®
Kathryn Albers Designs

Custom. Unique. Personal Keepsakes.

Custom@ImprintOnMyHeart.com | www.ImprintOnMyHeart.com

PO Box 223122, Carmel, CA 93922-3122 | 888.515.8324